

SIZING FOR EVERY BODY

Take the guesswork out of sizing. The first step to any good fit is having the right measurements. Need more information? Ask for a spec sheet. While size charts offer a basic guideline for fitting, spec sheets offer a unique size chart for each garment.

HOW TO MEASURE

Adult Sizes

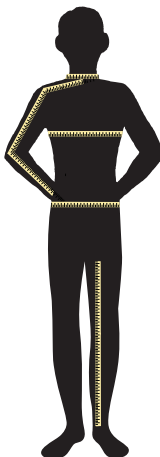
Chest – With arms down at sides, measure around the upper body, under arms and over the fullest part of the chest.

Neck – Measure around the base of the neck, inserting a finger or two between the tape and neck for comfort.

Waist – Measure waist at the height pants are normally worn, and keep tape comfortably loose.

Sleeve – Place hand on hip. Start at the center of the back of the neck and measure across the shoulder, to the elbow, and then down to the wrist.

Inseam – Measure a similar style pant that fits well and is the desired length. Measure from the crotch seam to the hem.



Ladies Sizes

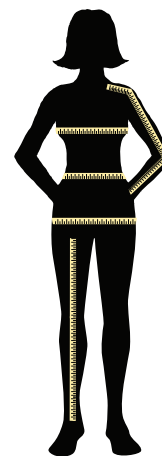
Bust – With arms down at sides, measure around the upper body, under arms and around the fullest part of the bust.

Waist – Measure at the natural waist, and keep tape comfortably loose.

Hips – Stand with heels together, and measure around the fullest part of the hips.

Sleeve – Place hand on hip. Start at the center of the back of the neck and measure across the shoulder, to the elbow, and then down to the wrist.

Inseam – Measure a similar style pant that fits well and is the desired length. Measure from the crotch seam to the hem.



SIZING UPDATES

Ladies Plus Sizing

In response to customer demand, ladies plus sizing is now easier to shop in the following brands: Red House®, Port Authority®, Sport-Tek®, Port & Company®, CornerStone® and District Threads®. Accommodating a more natural size progression, Plus 1X is now 3XL and Plus 2X has become 4XL. We've also added two new size categories, 5XL and 6XL, in select styles (L500, L508 and L608).

WAS	NOW
PLUS 1X	3XL
PLUS 2X	4XL

UPDATED SPEC SHEETS

Improved spec sheets now offer more information in a cleaner, easy-to-read format. Look for larger color swatches, more in-depth product descriptions and a helpful How To Measure section, along with a size chart specific to each style.

Print Close

PORT AUTHORITY Silk Touch Sport Shirt K500



A fabric and color family, our comfortable classic sport shirt is designed for versatility with unique details and drapes. Measure a fully laid flat and an accurate range of sizes. Size and color. It's all in the choice for understanding just about any shirt.

- collar
- 1/2" production pluge
- 1/2" roll collar ends
- 1/2" button pluge and button tabs
- 1/2" side vents
- 1/2" production with 1/2" stretch ribs

CARE INSTRUCTIONS
Machine wash cold with like colors.
Do not bleach. Tumble dry low.
Iron if necessary.




HOW TO MEASURE

CHEST
With arms down at sides, measure around the upper body, under arms and over the fullest part of the chest.



SIZE CHART

Size	XS	S	M	L	XL	XXL	XXXL	4XL	5XL	6XL
Chest	32-34	34-36	36-38	38-40	40-42	42-44	44-46	46-48	48-50	50-52

COLOR INFORMATION

Yellow	Black	Dark Blue	Maroon	Olive Green	Brown	Teal	Dark Green	Light Blue	Grey	Orange	Red
Light Blue	Light Pink	Light Green	Light Purple	Light Blue	Light Green	Light Blue	Light Green	Light Blue	Light Green	Light Blue	Light Green
Light Blue	Light Pink	Light Green	Light Purple	Light Blue	Light Green	Light Blue	Light Green	Light Blue	Light Green	Light Blue	Light Green

LADIES

Available in Port Authority Signature, Port Authority, Red House, Port & Company and CornerStone, this fit offers a comfortably relaxed look for a universally flattering appeal.



LADIES								
SIZE	XS	S	M	L	XL	XXL	3XL	4XL
	2/4	4/6	8/10	12/14	16/18	20/22	24/26	28/30
BUST	32-34	35-36	37-38	39-41	42-44	45-47	48-51	52-55

JUNIOR LADIES

Found in District Threads, the Junior Ladies fit is sized smaller with shortened sleeves and a shorter silhouette for a slimmer cut through the body. If you have a preferred size in Port Authority, then request a spec sheet to find your comparable size.



JUNIOR LADIES							
SIZE	S	M	L	XL	XXL	3XL	4XL
	3/5	7/9	11/13	15/17	17/19	19/21	21/23
BUST	30-32	33-35	36-37	38-39	40-41	42-44	45-47

SIZE CHARTS

Size charts offer helpful size guidelines.
For more detailed information,
request a product spec sheet.

ADULT SIZES

PORT AUTHORITY®



Sport-Tek
By Port Authority®

	XS	S	M	L	XL	2XL	3XL	4XL	5XL	6XL	7XL	8XL	9XL	10XL
REGULAR/TALL CHEST	32-34	35-37	38-40	41-43	44-46	47-49	50-53	54-57	58-60	61-63	64-66	67-69	70-72	73-75
REGULAR/TALL NECK	14½-15	15-15½	15½-16	16-16 ½	16½-17	17 - 17½	17½-18	18-18½	18½-19	19-19½	19½-20¼	20¼-20¾	20¾-21¼	21¼-21¾
REGULAR LONG SLEEVE ARM LENGTH	30½	32	34	35	36½	37½	38½	39½	40½	41½	41½	41½	41½	41½
TALL LONG SLEEVE ARM LENGTH				36½	38	39	40	41						
WAIST	26-28	29-31	32-34	35-37	38-40	41-43	44-47	48-51	52-54	55-57	58-60	61-63	64-66	67-69
INSEAM	30	31	32	32½	33	33½	34	34						

LADIES SIZES

	XS	S	M	L	XL	XXL	3XL	4XL	5XL	6XL
SIZE	2	4/6	8/10	12/14	16/18	20/22	24/26	28/30	32/34	36/38
BUST	32-34	35-36	37-38	39-41	42-44	45-47	48-51	52-55	56-59	60-63
WAIST	24-26	27-28	29-30	31-33	34-36	37-39	40-43	44-47	48-51	52-55
HIP	34-36	37-38	39-40	41-43	44-46	47-49	50-53	54-57	58-61	62-65
INSEAM	30½	31	31½	32	32½	33	33	33		

YOUTH SIZES

	XS	S	M	L	XL
SIZE	4	6/8	10/12	14/16	18/20
CHEST	25-26	26-28	28-30	30-32	32-34
WAIST	24-25	25-26	26-27	27-28	28-31

ADULT SIZES




	XS	S	M	L	XL	2XL	3XL	4XL
CHEST	32-34	35-37	38-40	41-43	44-46	47-49	50-52	53-55
WAIST	26-28	29-31	32-34	35-37	38-40	41-43	44-46	47-49

JUNIOR LADIES SIZES

	S	M	L	XL	XXL	3XL	4XL
SIZE	3/5	7/9	11/13	15/17	17/19	19/21	21/23
BUST	30-32	33-35	36-37	38-39	40-41	42-44	45-47
WAIST	22-24	25-27	28-29	30-31	32-33	34-36	37-39
HIP	31-33	34-36	37-38	39-40	41-42	43-45	46-49
INSEAM	31½	32	32½	33	33	33	33

YOUTH SIZES


	XS	S	M	L	XL
SIZE	4	6/8	10/12	14/16	18/20
CHEST	25-26	26-28	28-30	30-32	32-34

ADULT SIZES  **RED HOUSE**
THE WINE COUNTRY LIFESTYLE

	XS	S	M	L	XL	2XL	3XL	4XL
CHEST	32-34	35-37	38-40	41-43	44-46	47-49	50-53	54-57
NECK	14½-15	15-15½	15½-16	16-16½	16½-17	17-17½	17½-18	18-18½
SLEEVE LENGTH	30½	32	34	35	36½	37½	38½	39½

LADIES SIZES

	XS	S	M	L	XL	XXL	3XL	4XL
SIZE	2	4/6	8/10	12/14	16/18	20/22	24/26	28/30
BUST	32-34	35-36	37-38	39-41	42-44	45-47	48-51	52-55

ADULT SIZES  **NIKE GOLF**

	XS	S	M	L	XL	2XL	3XL	4XL
CHEST	32-35	35-38	38-41	41-44	44-47	47-50	50-53	53-56

LADIES SIZES

	S	M	L	XL	XXL
SIZE	4/6	8/10	12/14	16/18	20
BUST	32-35	35-37¼	37¼-39¼	39¼-42¼	42¼-44¼

ADULT SIZES  **Columbia**

	S	M	L	XL	XXL	3XL	4XL
CHEST	35-38	38-41	42-45	46-49	50-53	54-57	57-60
SLEEVE LENGTH	32½	33½	34½	35½	36½	36½	36½

LADIES SIZES

	S	M	L	XL	2X	3X
SIZE	4/6	8/10	12/14	16/18	20W/22W	24W/26W
BUST	34-36	36-38	38-41	41-44	46-49	50-53

ADULT SIZES  **Ogio**

	XS	S	M	L	XL	2XL	3XL	4XL
CHEST	32-34	35-37	38-40	41-43	44-46	47-49	50-53	54-57

LADIES SIZES

	XS	S	M	L	XL	XXL	3XL	4XL
SIZE	2	4/6	8/10	12/14	16/18	20/22	24/26	28/30
BUST	32-34	35-36	37-38	39-41	42-44	45-47	48-51	52-55

INFANT SIZES  **PRECIOUS CARGO**

	6M	12M	18M	24M
(APPROX.) AGE (MOS)	3-6	6-12	12-18	18-24
(APPROX.) WEIGHT (LBS)	7-15	16-22	23-27	28-30
(APPROX.) LENGTH (IN)	17-24	25-28	29-31	32-34

TODDLER SIZES

	2T	3T	4T
(APPROX.) AGE (MOS)	30-33	33-36	36-41
(APPROX.) WEIGHT (LBS)	32-36	36-39	39-42
(APPROX.) CHEST SIZE (IN)	24	25	27

MEN'S SIZES

SPI4, SP24, CS10 CSX10, CSX20, CS20, CS16 & CS26 MEN'S INDUSTRIAL SHIRTS

	S	M	L	XL	2XL	3XL	4XL	5XL	6XL
NECK	14-14½	15-15½	16-16½	17-17½	18-18½	19-19½	20-20½	21-21½	22-22½
SLEEVE* (REGULAR)	33	33½	34	34½	35	35	35	35	35
SLEEVE* (LONG)	—	35½	36	36	36	36	—	—	—

Back Length: Regular – regular back length; Long – plus 1½"

*Applies only to long sleeve styles (SPI4, CS10, CSX10 & CS16)

PT26 MEN'S INDUSTRIAL SHORT 9" inseam on all sizes

WAIST	27	28	29	30	31	32	33	34	35	36	37	38	40	42	44	46	48	50

PT20 MEN'S INDUSTRIAL PANT Black, Charcoal & Navy *These sizes also available in Khaki, Spruce Green, White & Brown

WAIST	27	28	29	30	31	32	33	34	35	36	37	38	40	42	44	46	48	50	52	54	56	58	60
LENGTH																							
28				X		X		X		X		X	X	X	X								
29								X		X		X											
30		X		X*		X*		X*		X*		X*	X*	X*	X*	X*	X	X					
31				X		X		X		X		X	X	X	X								
32		X		X*		X*		X*		X*		X*	X*	X*	X*								
33						X		X		X		X	X	X									
34								X*		X*		X*	X*										
**37U	X*	X*	X*	X*	X*	X*	X*	X*	X*	X*	X*	X*	X*	X*	X*	X*	X*	X*	X*	X*	X*	X*	X*
**40U								X		X		X	X	X									

Pant size is determined by waist and inseam measurements in inches.

**Unfinished hem. Hemming service available in ½" increments on unfinished styles. Hemming fee is \$0.50 per pant.

PT60 MEN'S ELASTIC INSERT PANT

WAIST	27/28	29/30	31/32	33/34	35/36	37/38	39/40	41/42	43/44	45/46	47/48	49/50	51/52	53/54	55/56	57/58	59/60
LENGTH																	
30		X	X	X	X	X	X	X	X	X							
32		X	X	X	X	X	X	X	X								
34			X	X	X	X											
**37U	X	X	X	X	X	X	X	X	X	X	X	X	X	X	X	X	X

LADIES' SIZES

SPI3 & SP23 LADIES' INDUSTRIAL SHIRTS

	S		M		L		XL		2XL		3XL		4XL	
SIZE	6	8	10	12	14	16	18	20	22	24	26	28	30	32
CHEST	35-36	36-37	37-38	38-39½	39½-41	41-42½	42½-44½	44½-46½	46½-48½	48½-50½	50½-52½	52½-54½	54½-56½	56½-58½

PT61 LADIES' ELASTIC INSERT PANT 34" unhemmed

	4	6	8	10	12	14	16	18	20	22	24	26	28
WAIST	27/28	28/29	29/30	30/31	31/32½	32½/34	34/35½	35½/37½	37½/39½	39½/41½	41½/43½	43½/45½	45½/47½
HIPS	36½/37½	37½/38½	38½/39½	39½/40½	40½/42	42/43½	43½/45	45/47	47/49	49/51	51/53	53/55	55/57

MEN'S SIZES

	XS	S	M	L	XL	2XL	3XL	4XL	5XL	6XL
REGULAR CHEST	32-34	35-37	38-40	41-43	44-46	47-49	50-53	54-57	58-60	61-63

LADIES' SIZES

	XS	S	M	L	XL	XXL	3XL	4XL
SIZE	2	4/6	8/10	12/14	16/18	20/22	24/26	28/30
CHEST	32-34	35-36	37-38	39-41	42-44	45-47	48-51	52-55